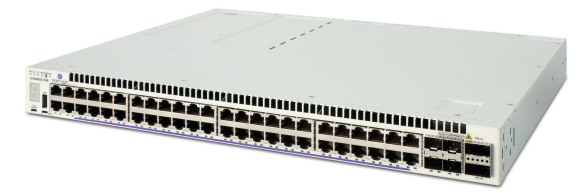


# OmniSwitch™ 6860 Stackable LAN Switch

Alcatel-Lucent OmniSwitch™ 6860 Stackable LAN Switches (SLS) are compact, high-density Gigabit Ethernet (GigE) and 10 GigE platforms designed for the most demanding converged networks.



## LAN STACKABLE LAN SWITCH

## OVERVIEW

In addition to high performance and availability, the OS6860(E) offers enhanced quality of service (QoS), user authentication, deep packet inspection (DPI), and comprehensive security features to secure the network edge while accommodating user and device mobility with a high degree of integration between the wired and wireless LAN.

The enhanced models of the OmniSwitch 6860 family also supports emerging services such as application fingerprinting for network analytics and up to 60 watts of Power over Ethernet (PoE) per port, making it ready to meet the evolving business needs of enterprise networks.

These versatile LAN switches can be positioned:

At the edge of mid- to large-sized converged enterprise networks

At the aggregation layer

In a small enterprise network core

In the data center for GigE server connectivity and SDN applications

## KEY BENEFITS

- With the variety of interfaces and models, the OmniSwitch 6860 family meets any customer configuration needs and offers excellent investment protection and flexibility
- The OmniSwitch 6860 Virtual Chassis increases system redundancy, resiliency, and high availability while simplifying deployment, operations and management of the network
- With advanced PoE capabilities and high density of PoE ports, the OS6860 is ideal for converged campus deployments. It offers deployment flexibility, simplifying the wiring and reducing the time to deploy a variety of edge devices
- The OS6860 application monitoring capability provides network administrators with a comprehensive view of the applications running in the network, enabling optimization and control of network performance
- With its advanced capabilities, the OS6860 shows outstanding performance when supporting real-time voice, data, and video applications
- OS6860E offers flexible deployment options and enables the network for BYOD deployments and zero-touch guest management
- OS6860E supports SDN for fast deployment of new network services
- Future proofs enterprise investment and enables interoperability with third party solutions

## KEY FEATURES

### VERSATILE FEATURES AND MODELS OFFERING HIGH DENSITY GIGABIT AND 10 GIGABIT INTERFACES

- Up to 8 switches can be connected using Virtual Chassis technology to create a single chassis-like entity with up to 32 10Gigabit uplinks and 384 Gigabit ports

### IEEE 802.3AF AND 802.3AT COMPLIANT POE OF 30 W PER PORT ON ALL PORTS

- The enhanced models of OS6860 family support up to 60W of PoE per port on 4 ports

### HARDWARE-ACCELERATED DEEP PACKET INSPECTION (DPI) AVAILABLE ON ALL MODELS

- Application monitoring and fingerprinting is available on the enhanced models

### OMNISWITCH 6860 IS SDN READY

- Supporting programmable AOS RESTful APIs, OpenFlow and OpenStack allows the creation of specialized services

### ADVANCED UNIFIED ACCESS AND COMPREHENSIVE AND SECURE BYOD SERVICES

- Integrated Policy with dynamic User Network Profiles
- Extensive security features for network access control (NAC), policy enforcement and attack containment
- SIP Fluency to provision and monitor QOS treatment of SIP flows
- Airgroup™ Network Services for Bonjour speaking devices
- Advanced guest management capabilities
- Device on-boarding and automated 802.1x provisioning
- Device posture/health check and fingerprinting
- Application management

## TECHNICAL INFORMATION

OmniSwitch 6860 family	GigE RJ-45 ports	GigE PoE+ ports	GigE PoE++ ports	100/1000 SFP ports	1/10GigE SFP+ ports	20G VFL ports*	PoE power budget	Power supply AC/DC	Optional backup PSU	Height rack units
Standard models										
OmniSwitch 6860-24	24	0	0	0	4	2	NA	AC	AC	1
OmniSwitch 6860-48	48	0	0	0	4	2	NA	AC	AC	1
OmniSwitch 6860-24D	24	0	0	0	4	2	NA	DC	DC	1
OmniSwitch 6860-48D	48	0	0	0	4	2	NA	DC	DC	1
Enhanced models										
OmniSwitch 6860E-24	24	0	0	0	4	2	NA	AC	AC	1
OmniSwitch 6860E-48	48	0	0	0	4	2	NA	AC	AC	1
OmniSwitch 6860E-24D	24	0	0	0	4	2	NA	DC	DC	1
OmniSwitch 6860E-48D	48	0	0	0	4	2	NA	DC	DC	1
Power over Ethernet+ models										
OmniSwitch 6860-P24	0	20	4	0	4	2	450/900W **	AC	AC	1
OmniSwitch 6860-P48	0	44	4	0	4	2	750/1500W **	AC	AC	1
Enhanced POE+ models										
OmniSwitch 6860E-P24	0	20	4	0	4	2	450/900W **	AC	AC	1
OmniSwitch 6860E-P48	0	44	4	0	4	2	750/1500W **	AC	AC	1
Enhanced Fiber optic models										
OmniSwitch 6860E-U28	0	0	0	28	4	2	NA	AC	AC	1
OmniSwitch 6860E-U28D	0	0	0	28	4	2	NA	DC	DC	1

\* 60W per port

\*\* Second value is for dual power supply configuration