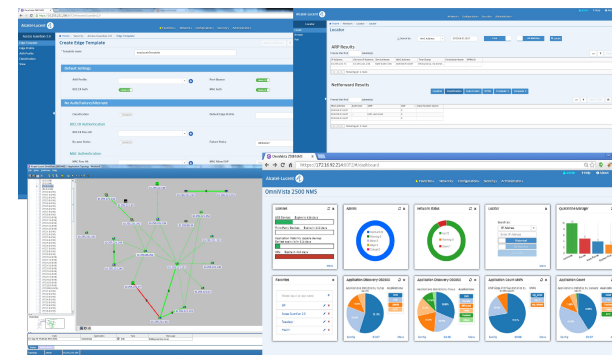


OmniVista 2500 NMS

MANAGEMENT NETWORK

The OmniVista™ 2500 Network Management System provides a cohesive management and network wide visibility increasing IT efficiency and business agility.



OVERVIEW

The OmniVista™ 2500 Network Management System (NMS) provides a full set of management tools for converged campus networks and data center switching. It includes analytics, Unified Access security and data center virtualization management for large, diversified network infrastructures within a single cohesive platform.

The scalable system oversees daily network operations and features with centralized management for network assurance, network security & policy and moves, adds & changes. OmniVista2500 provides a highly scalable solution available in the traditional server model as well as available as a virtual machine providing better SaaS support.

The administrator's interface is very flexible and accessible using standard web browsers. anytime, anywhere. For greater flexibility, RESTful API's allow third party and tailor made management applications to interact in a standardized way.

OmniVista 2500 NMS increases the IT efficiency of day-to-day operations resulting in a better user quality experience.

KEY BENEFITS

- OmniVista 2500 NMS provides a web-based interface for management providing a cohesive management and network wide visibility increasing IT efficiency and business agility. OmniVista 2500 NMS has a smart integration with the latest web techniques allowing access anytime from anywhere. OmniVista 2500 NMS has a web interface providing a customizable dashboard that can be tailored to the network administrator's needs of most used or critical management functions.
- OmniVista 2500 NMS is a highly scalable system available in the traditional server model as well as a virtual appliance providing SaaS support.
- OmniVista 2500 NMS provides unified management of your whole network with Alcatel-Lucent network and third network equipment. It provides integration with ClearPass for full BYOD services for ease and consistency of management.
- Providing a network-wide management system for the Alcatel-Lucent Enterprise Network portfolio OmniVista 2500 NMS comprises a comprehensive set of components and tools for infrastructure configuration monitoring, security, device configuration, alert management, quarantine, troubleshooting, downtime resolution and overall management. It reduces cost and time required for efficient deployment of QoS and ACLs across thousands of devices delivering consistent policy behavior.
- The Virtual Machine Manager component works with leading virtualization platforms to create a seamless, fully integrated management for virtual machine movements and ensures the network policies move with the virtual machine

KEY FEATURES

PLATFORM

- Single consolidated interface for network deployment, troubleshooting, performance analysis, configuration operations.
- Unifies management of network services, resources users for wired, wireless
- Northbound Interface RESTful API for application interoperability

USER INTERFACE

- HTML5 web based Client based for flexible client options (Tablets)
- User Interface following Web 2.0 principles enabling easy navigation, consistent workflow and user experience

DASHBOARD

- Real time monitoring and analysis of critical network performances indicators through visual widgets
- Full choice of displays, data and other important network and device information with advanced reporting capabilities

TOPOLOGY

- Supports discovery for Alcatel-Lucent Enterprise devices and third-party devices,
- Visual topology for Logical and physical
- infrastructure with actual neighbor linkage info (IP subnet, Layer 2 , LLDP adjacency protocols) with live device status
- Dynamic custom logical map based on user defined based filters (IP subnet, location, model, user provided descriptive

UNIFIED ACCESS CONFIGURATION

- Unified User interface for wired and wireless Role Profiles for User based access
- Cohesive Authentication configuration and end-user profile definition for appropriate network access rights and dynamic business policies

TECHNICAL INFORMATION

OmniVista 2500™ Network Management System (NMS) contains a server and a client part. The server packaging is available in two formats:

- o Installable server, running on top of a certified operating system
- o Appliance, including the server and CentOS, running on top of a certified hypervisor.

The OmniVista 2500 NMS client is HTML5 web based with Java applications.

OmniVista 2500 NMS server
Certified Operating Systems

- o Microsoft® Windows® Server 2012 R2 (64 bit version only)
- o Microsoft® Windows® 7 SP1 (64 bit version only)
- o Microsoft® Windows® 8.1 (64 bit version only)
- o Red Hat® Enterprise Server 6.5 (64 bit version only)
- o SUSE® Linux Professional v11.SP3 (64 bit version only)

Minimum hardware requirements

- o Intel® Pentium® class Quad Core 2.4 GHz
- o 16 GB RAM
- o 100 GB Free Disk Space

OmniVista 2500 NMS appliance
Certified Hypervisors:

- o VMware ESXi 5.0 and above
- o VMware Player 4.0 and above
- o VMware vCenter Server 5.0 and above

Minimum resource requirements

- o Four CPU of Intel® Pentium® class 2.4 GHz
- o 16 GB RAM
- o 100 GB Free Disk space

OmniVista 2500 NMS client
Minimum configuration

- o Microsoft Windows, Red Hat ES, SUSE LP (32 and 64 bit versions)
- o Intel Pentium Dual Core 2.4 GHz minimum
- o 2 GB RAM

Certified Web Browsers:

- o Internet Explorer 10+ for Windows PC client
- o Mozilla FireFox 26+ for Windows PC and Linux Clients
- o Google Chrome 26+ for Windows PC and Linux Clients

OmniVista 2500 NMS Unified Role based support

- o OmniAccess WLAN Controller Release 6.3 and higher

OmniVista 2500 NMS 3rd party systems interoperability

Virtual Machine Manager Hypervisor interoperability

- o VMware vCenter Standard Release 5.5
- o Citrix XenServer Advanced and Enterprise Release 6.2

Policy Manager interoperability

- o Aruba ClearPass CPPM release 6.3 or higher