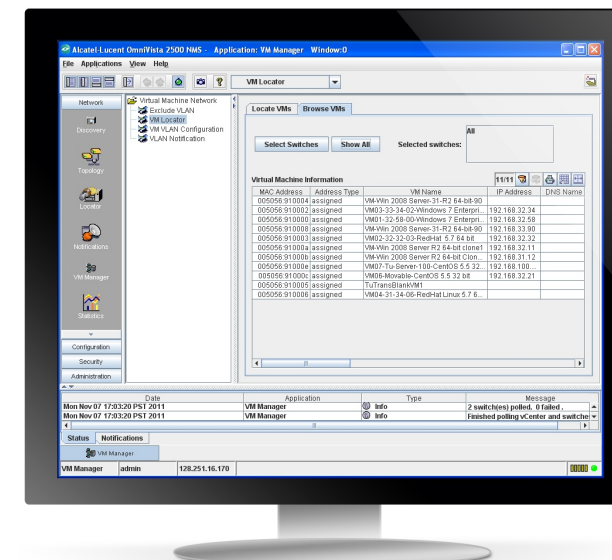


# OmniVista 2500 VMM

MANAGEMENT NETWORK

The Alcatel-Lucent OmniVista™ 2500 Virtual Machine Manager (VMM), an optional component of the OmniVista 2500 Network Management System (NMS), addresses new operational requirements and new capabilities required to ensure consistent, unified management and operation simplification for the new virtualized infrastructure deployed in data centers.



## OVERVIEW

The Alcatel-Lucent OmniVista 2500 Virtual Machine Manager (VMM), an optional component for the OmniVista 2500 Network Management System (NMS), addresses new operational requirements and new capabilities required to ensure consistent, unified management and operation simplification for the new virtualized infrastructure deployed in data centers.

The OmniVista 2500 VMM offers a comprehensive end-to-end solution unifying physical and virtual infrastructures into a single viewing pane for network operators. Network operators can monitor and control virtual networks, ensuring that virtual network policies are consistently and automatically applied across the infrastructure. This enables error-free network operations for the IT organization and simplifies

deployment of value-added services such as live virtual machine migration which includes VMware® VMotion™ and Citrix® XenMotion™.

The OmniVista 2500 VMM contributes to a comprehensive manageability solution that in conjunction with the OmniVista 2500 NMS spans the Alcatel-Lucent routing and switching network portfolio.

## KEY BENEFITS

- Vendor agnostic architecture: Supports and interfaces with leading enterprise virtualization vendors, VMware® vCenter™ and Citrix® XenServer™
- Virtual network resources visibility and inventory: Automatically discovers and constantly updates the complete virtual machine inventory including all relevant information related to the network infrastructure, offering a complete single viewing pane for end-to-end physical and virtual networks, increasing operational efficiency
- Simplified tracking and troubleshooting: Provides correlated information and a single viewing pane on connectivity between virtual and physical networks, offering a complete current state of the network with constant synchronization. It simplifies troubleshooting operations and reduces downtime.
- Unified provisioning with automation: Establishes virtual network profile definition and configuration. Facilitates virtual network profile assignment to network infrastructure to ensure consistent service delivery. It reduces the need to constantly communicate between network infrastructure and the virtualization team changes related to configuration changes.
- Event and audit logs: Maintains a log of all critical events and actions, tracking all critical configuration changes
- Flexible installation: Supports all leading IT platforms and server operating systems. It leverages VMware vCenter directly out of the box, requiring no extra installation on hypervisor platform.

## KEY FEATURES

### KEY FEATURES

- Supports and interfaces with leading Enterprise virtualization vendor, VMware vCenter and Citrix XenServer
- Automatically discovers and constantly updates the complete virtual network inventory to offer a complete single viewing pane for end-to-end physical and virtual networks
- Simplified tracking and troubleshooting capabilities with VM locator to offer a complete state of network with constant synchronization between a virtual and physical network, including real-time and historical location tracking for virtual machines
- Facilitates unified provisioning with automation for virtual network profile configuration to reduce human errors by managing virtual network profile assignment to the data center network infrastructure for maximum service availability
- Maintains event and audit logs for all critical actions for OmniVista 2500 VMM to provide historical records for compliance purposes
- Flexible installation as OmniVista 2500 VMM runs as an optional module fully integrated with OmniVista 2500 NMS, relying on the same management user interface and same cohesive workflow, and reducing the training curve

## TECHNICAL INFORMATION

### Minimum OmniVista 2500 VMM software requirements (server and client)

- Microsoft® Windows® Server 2008 (32-bit and 64-bit versions) - server only
- Microsoft® Windows® 7 Enterprise (32-bit and 64-bit versions)
- Red Hat® Enterprise Server 6.1 (32-bit and 64-bit versions)
- SUSE® Linux Enterprise Server 11.2 (64-bit version)

### Minimum OmniVista 2500 VMM server configuration

- For Microsoft Windows, Red Hat ES, SUSE:
  - Intel® Pentium® Quad Core 2 GHz minimum
  - 4 GB RAM minimum

### Minimum OmniVista 2500 NMS client configuration

- For Microsoft Windows, Red Hat ES, SUSE configuration
  - Intel Pentium Dual Core 2 GHz minimum

- 2 GB RAM minimum

### Minimum VMware requirements for VM inventory and location features

- VMware vCenter Server Standard, Release 4.1 minimum

### Minimum Citrix requirements for VM inventory and location features

- Citrix XenServer Advanced and Enterprise Release 6.0 minimum